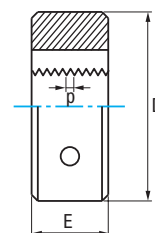


Ref. **3546**

Matryca ręczna BSP (gaz)



HSSE 5%Co	Gas (BSP)	DIN 24231	α 20°	
Tol. A	Faza 2,25 gwintu			Gwint równoległy (BSPP)



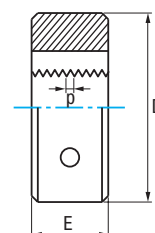
G	Hilos Threads Filets	D mm	E mm	N° Art. 5% Co	€
G1/8	28	30	11	81341	43,95
G1/4	19	38	10	81342	43,95
G3/8	19	45	14	81343	59,70
G1/2	14	45	14	81344	59,70
G3/4	14	55	16	81345	117,29
G1"	11	65	18	81346	179,26

Ref. **3506**

Gwintownik ręczny BSP (gaz)



HSS	Gas (BSP)	DIN 24231		Tol. A
α 10 - 17°	Faza 1,75 gwintu			Gwint równoległy (BSPP)



G	Hilos Threads Filets	D mm	E mm	N° Art. HSS	€
G1/8	28	30	11	63461	39,95
G1/4	19	38	10	63455	39,95
G3/8	19	45	14	63467	51,68
G1/2	14	45	14	63452	51,68
G5/8	14	55	16	75496	78,86
G3/4	14	55	16	63464	107,10
G7/8	14	65	18	76252	112,11
G1"	11	65	18	63470	112,11
G1" 1/8	11	75	20	76202	205,35
G1" 1/4	11	75	20	76210	205,35
G1" 1/2	11	90	22	76224	205,35